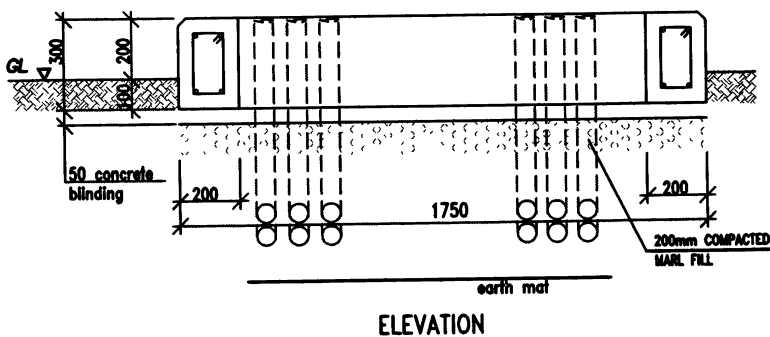


TRANSFORMER RATING	APPROX WEIGHT (kgs)	DIM (mm)	
		A	B
750 KVA	3500	1750	1500

TABLE 1

NOTES

1. Concrete pad to be built according to "A" and "B" dimensions given in table 1.
2. Number and size of L.T ducts will depend on customers requirements.
3. Transformer to be earthed to customer's earth mat and tied to system earth. Earth leads to exten 1500(5') above pad.
4. High tension (H.T) and Low tension (L.T) ducts to be buried to a minimum depth of 750mm.



CONCRETE PAD DETAILS
THREE PHASE PADMOUNT
TRANSFORMER
(LOOP FEED)

FIG 14B