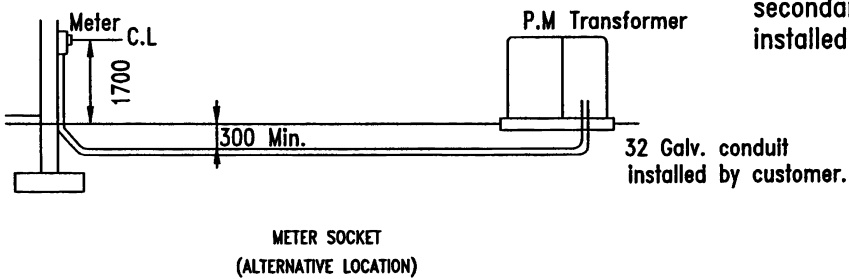
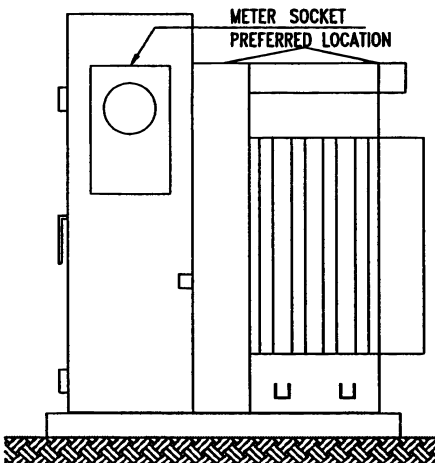


**3 PHASE TRANSFORMER LT COMPARTMENT**

**NOTES**

1. Installation of CTs is only permitted where one customer is being fed from the transformer.
2. CT should be of suitable rating for transformer capacity. See CT application guide.
3. CTs shall be installed with load (H2) Marking visible from the front.
4. Meter socket may be installed either directly onto the side of the transformer LT compartment or a suitable structure provided by the customer a maximum of 6000mm from the transformer.
5. Check CTs to ensure that the shorting bars are in place until the meter secondary wiring and meter are installed.



**3 PHASE PADMOUNT TRANSFORMER  
C.T. AND METER INSTALLATION**